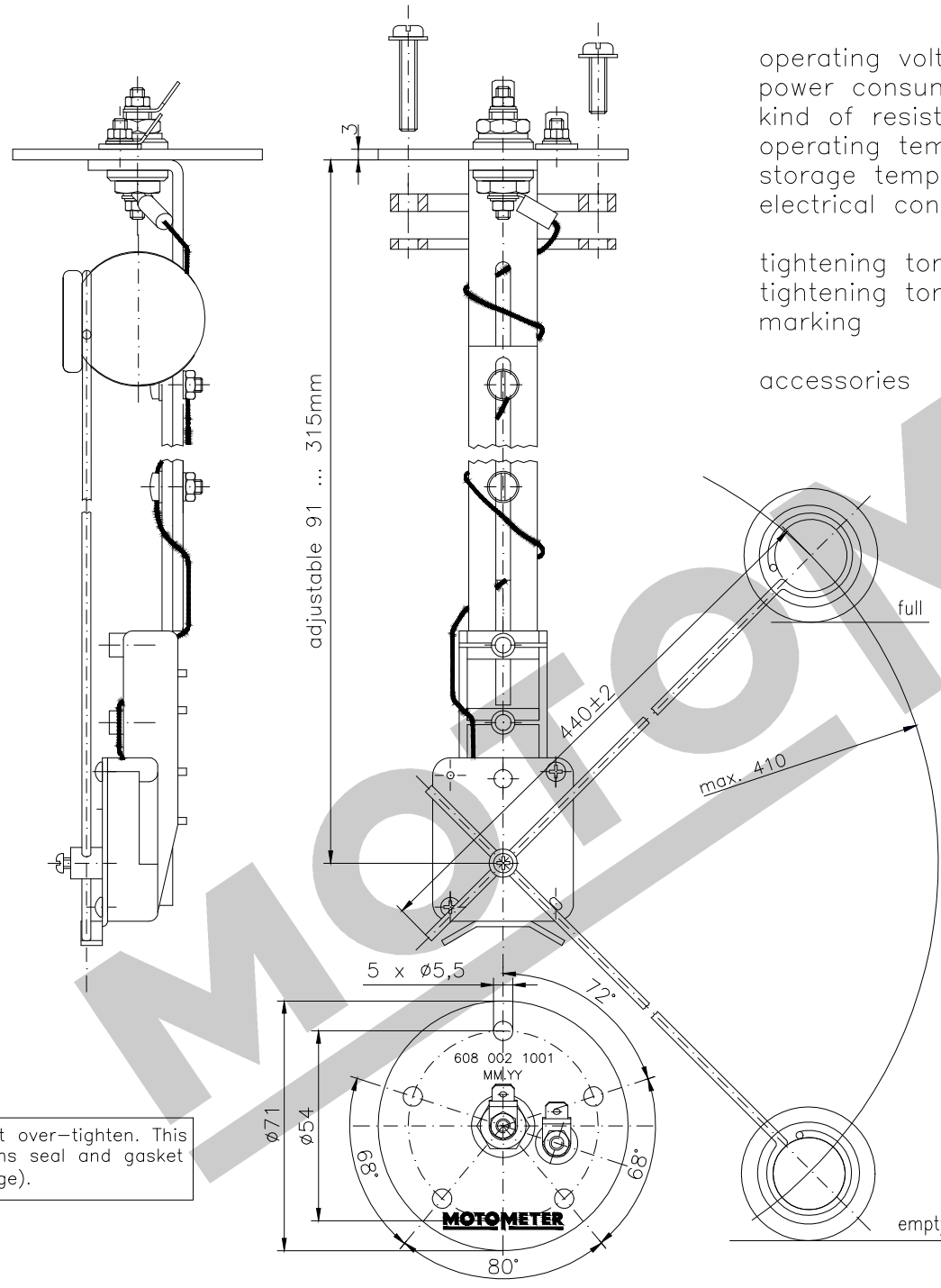


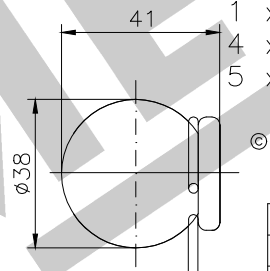
8 7 6 5 4 3 2 1



operating voltage : 6 ... 24V
 power consumption : max 20mA
 kind of resistor : thick film Ⓞ
 operating temperatur : -40 ... +65°C
 storage temperatur : -40 ... +65°C max. 85°C (max. 1h)
 electrical connection : 2x nut M4 SW7 with flat connecting A 6,3x0,8 DIN 46244

tightening torque flange : max. 5Nm
 tightening torque connect.: max. 1Nm
 marking : MM-Logo, part number, date of manufacture on flange

accessories : rubber seal, metal flange,
 1 x bolt M5x28mm,
 4 x bolt M5x16mm,
 5 x washer 5x10mm



testing value table (operating values)

fill level	empty	full
resistance (Ω)	3	180
tolerance (Ω)	±3	+12 -2

Pos.	Ind.	Kind of modification	Date	Name
A8-7	Ⓞ	note added (!)	13.07.24	SMuel
D3	Ⓞ	geometry changed	01.06.23	P.Kof
F3-5	Ⓞ	text changed	25.03.15	Aug
A1-2	Ⓞ	text changed	15.05.09	Aug

replacement for drawing K 608.002.1001 from 03.05.06

MOTOMETER	date	08.09.08
	sig.	Augustin
	rev.	
	pass.	22.07.24 K.Fritz

for non-tolerated dimensions: DIN 7168 mittel
 customer number:

description:
 fuel level sensor
 adjustable 150 ... 600mm Ⓞ

Maßstab	Zeichnung-Nr.
1:2	608 002 1001

8 7 6 5 4 3 2 1