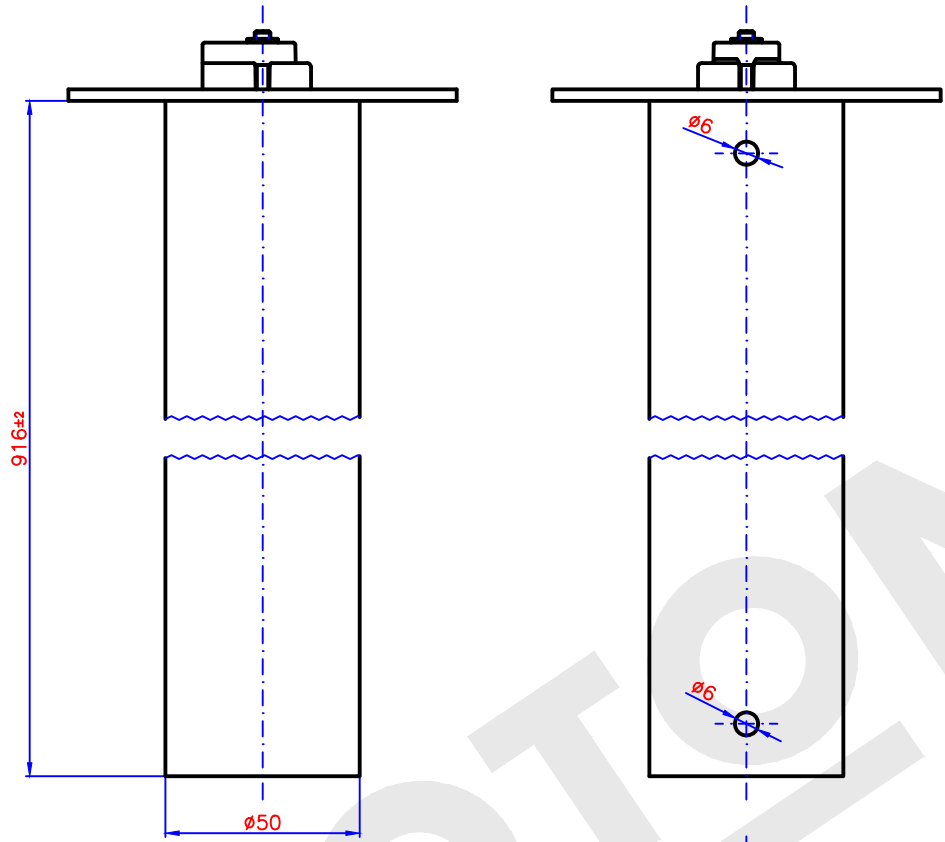


8 7 6 5 4 3 2 1

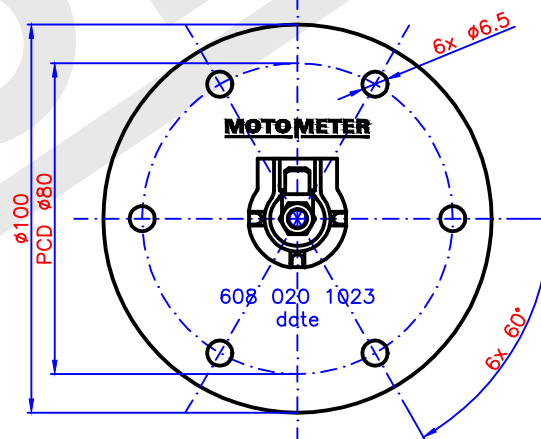
nominal load : P_{max}=300mW
 operating temperature : -40 ... +85°C (max. 95°C max 1h)
 usefull for : diesel (DIN EN 590)
 arctic diesel
 RME (DIN V 51606)
 gasoline
 kerosine
 methanol
 ethanol

marking : part number, manufacture date, MM-logo
 material : stainless steel 1.4401
 electrical connection : blade terminal A 6.3x0.8 DIN 46244
 installing diameter : 55±1mm
 included : rubber seal
 mounting at the tank according connection B DIN 75612



testing value table
(operating values)

H (mm)	R (Ω)
>864	1.0
864	3.0
843	5.0
822	7.0
801	9.0
780	11.0
759	13.0
738	15.0
717	17.0
696	19.0
675	21.0
654	23.0
633	25.0
612	27.0
591	29.0
570	31.0
549	33.0
528	35.0
507	37.0
486	39.0
465	41.0
444	43.0
423	45.0
402	47.0
381	49.0
360	51.0
339	53.0
318	55.0
297	57.0
276	59.0
255	61.0
234	63.0
213	65.0
192	67.0
171	69.0
150	71.0
129	73.0
108	75.0
87	77.0
66	79.0
45	81.2
tolerance	
±5	±1.5%



pos.	ind.	kind of modification	date	name

MOTOMETER	date	09.10.17
	sig.	Augustin
	rev.	
for dimensions without tolerance indication: DIN ISO 2768 mittel	pass.	

customer number:

description:
fuel level sensor
 PCD \varnothing 80 916mm

scale: - drawing number:
 608 020 1023

8 7 6 5 4 3 2 1