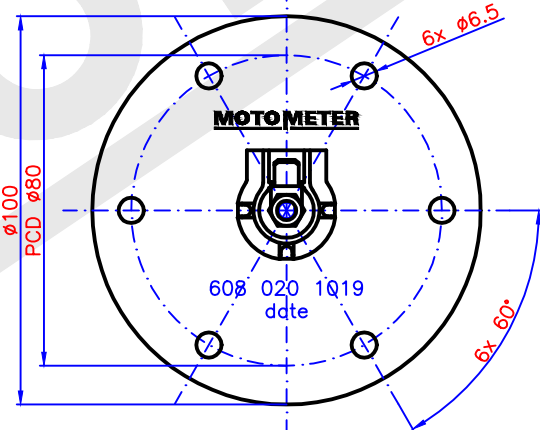
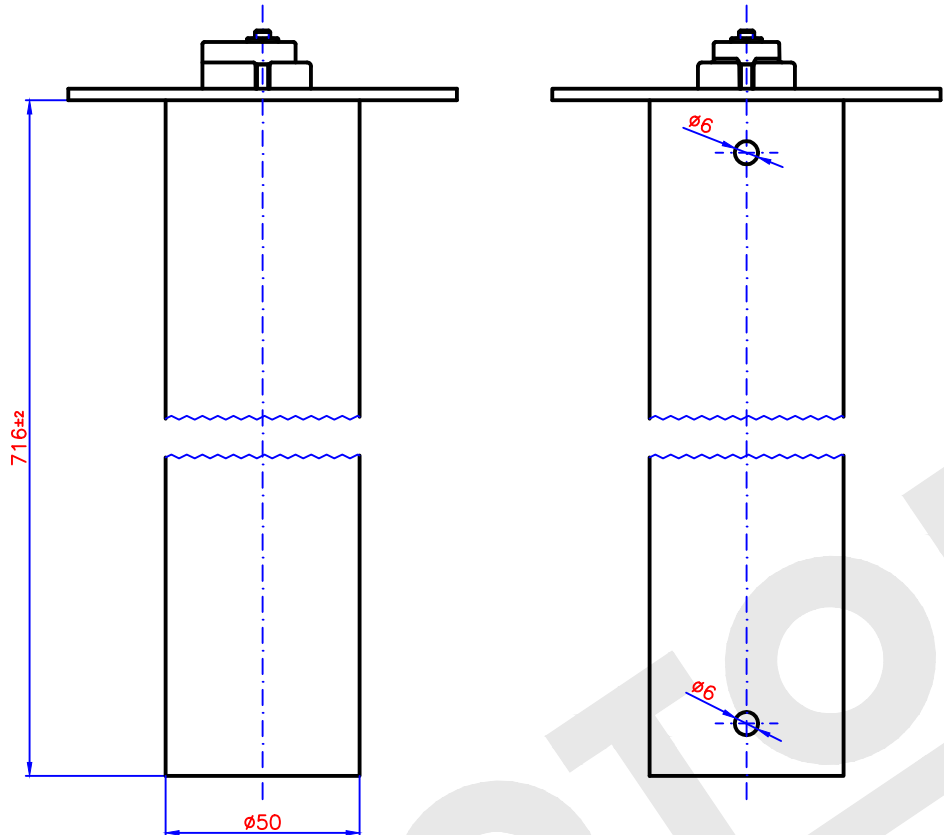


8 7 6 5 4 3 2 1

nominal load : $P_{max}=300mW$
 operating temperature : $-40 \dots +85^{\circ}C$ (max. $95^{\circ}C$ max 1h)
 usefull for : diesel (DIN EN 590)
 arctic diesel
 RME (DIN V 51606)
 with additives of : gasoline
 kerosine
 methanol
 ethanol
 marking : part number, manufacture date, MM–logo
 material : stainless steel 1.4401
 electrical connection : blade terminal A 6,3x0,8 DIN 46244 with hexagon nut
 installing diameter : $55\pm 1mm$
 included : rubber seal, 6x screw M6x16 @
 mounting at the tank according connection B DIN 75612



testing value table (operating values) @

H (mm)	R (Ω)
>674	1.0
674	2.0
653	3.0
632	4.0
611	5.0
590	6.0
569	7.0
548	8.0
527	9.0
506	10.0
485	11.0
464	13.0
443	15.0
422	17.0
401	19.0
380	21.0
359	23.0
338	26.0
317	29.0
296	32.0
275	35.0
254	38.0
233	41.0
212	44.0
191	47.0
170	50.0
149	53.0
128	56.0
107	59.0
86	62.0
65	65.0
44	69.7
tolerance	
±5	±(1.0+1.5%)

pos.	ind.	kind of modification	date	name
E2-3	Ⓢ	screws added	18.02.16	Aug
A3-D4	Ⓢ	testing value table added	10.02.16	Aug

MOTOMETER	date	01.04.15
	sig.	Augustin
	rev.	
for dimensions without tolerance indication: DIN ISO 2768 mittel	pass.	

customer number:
 description:
fuel level sensor
 PCD ø80 716mm

scale:	drawing number:
-	608 020 1019

8 7 6 5 4 3 2 1